



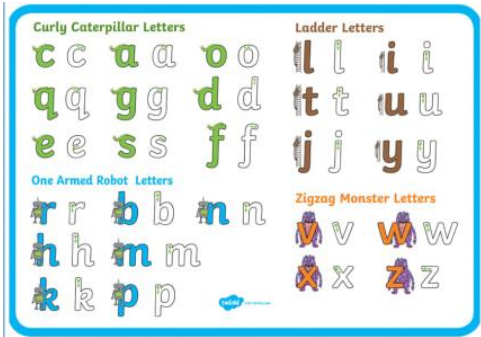
This half term our focus dinosaur is 'Motivatasaurus'. We will be learning how to concentrate on achieving something important to us, giving it our full attention and trying our very best.



Volunteers for walks
We need volunteers to accompany us on a walk to the Yateley Common and Frogmore Park this half term.
Tuesday 16th June 9.15-11.30
Please complete the online form if you are able to help.
Thank you for your support.

This half term we will be exploring our local environment and comparing places, thinking about whether we like or dislike a place. We will be using our senses to describe what we observe and representing an environment in our drawings and play.

This half term we will be focusing on perfecting our letter formation, learning how to form numerals and beginning to write short phrases using finger spaces.



Key vocabulary:
Bigger/smaller
Like/dislike
Frogmore, map, school, pond, road, pavement, senses, park, home and directional language.



Talk to your child about what information is safe to share online and what is not.



We are working on finding 1 more and 1 less from a given number within 10 in Mathematics. We are also working on our automatic recall of number bonds to 5. You can support your child with this by practising at home.



Religious Education
This half term we will be learning about Special People. Thinking about which people are special to us and who is special to Christians and Hindus.

E- Safety
We will be looking at how to keep safe online. We will be using Smartie the Penguin to remind us what to do when we get that uh-oh feeling and to always ask a grown-up for help.
We will be talking about personal information and being responsible online.

Home Learning Challenge
Due: Monday 15th June



Go for a walk in the local area and find out 3 facts about the area you live in. You could present this as photos, drawings, maps or written facts